

# GCE NODE

An Industry-Driven Cluster for Ocean Technologies

## **EU and Norwegian Soft Funding of R&D Activities and Financing of Projects**

February 16. 2022

## Welcome & Introduction

• Tom Fidjeland, CEO, GCE NODE

### ***1. Sustainability and the green transition***

**Research Council of Norway** – Tor Borgar Hansen, Special Advisor

### ***2. Capital and expertise to support sustainable growth and export for Norwegian businesses***

**Innovation Norway** – Jon Arne Rasmussen, Financial Advisor

### ***3. Industrial real estate investment. Catapult Centres providing infrastructure, equipment and competence for test and piloting***

**SIVA Real Estate** – Sivert Almås Eli / **Norwegian Catapult Centre Future Materials** – Aslaug Hagestad Nag, CEO

### ***4. Funding to support technology development, innovation and market development that contributes to emission reductions towards the low-emission society***

**ENOVA** – Anita Fossdal, Senior Advisor

### ***5. Horizon Europe – What's in it for you?***

**EU Funding** – Isabelle-Louise Aabel, EU Advisor, **GCE NODE**

### ***6. Supporting the green export transition – Competitive long-term financing solutions from Export Finance Norway***

**EKSFIN** (Export Finance Norway) – Thor-Ole Fardal, Senior Client Executive, Large Corporates

### ***7. Experience from Norwegian Soft Funding***

**Elkem Technology** – Håvard Moe, Senior Vice President

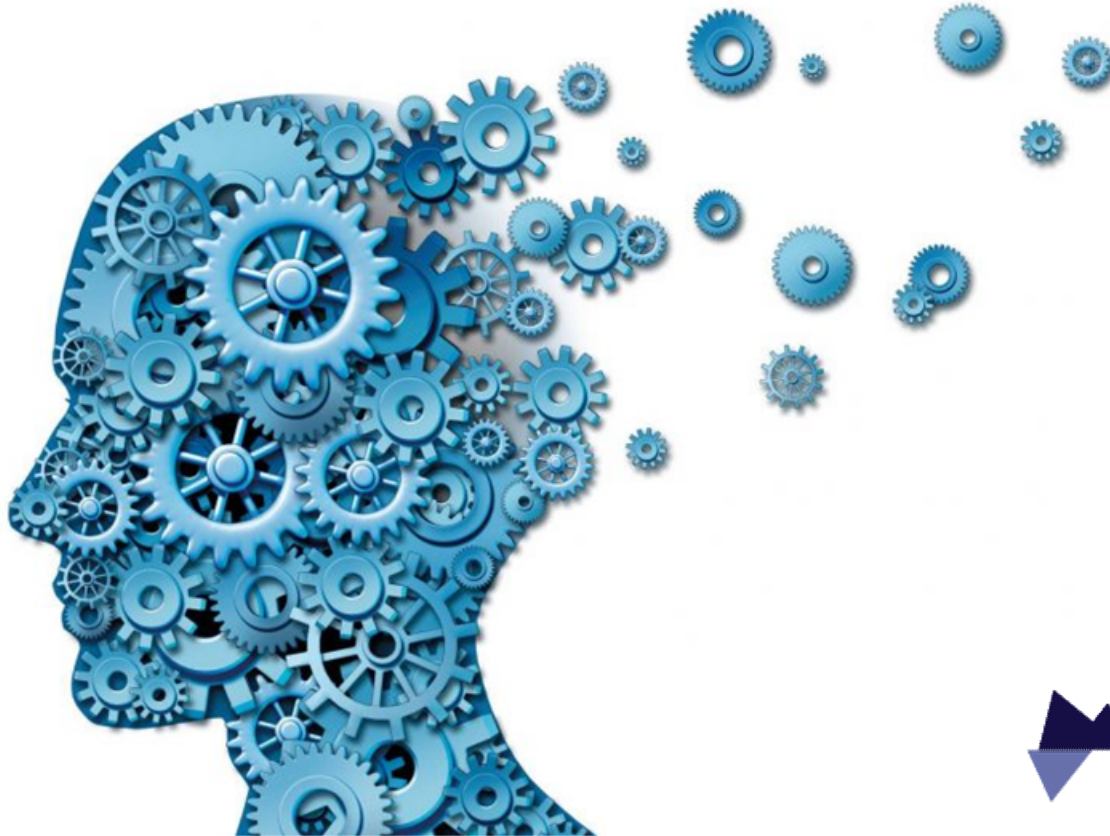
### ***8. Experience of Norwegian Soft Funding***

**FIVEN Group** – Pål Runde, Chief Research Officer

### ***9. Summary and Discussion*** – **GCE NODE**

# Norwegian Soft Funding

GCE | **NODE** | AN INDUSTRY-DRIVEN CLUSTER  
FOR OCEAN TECHNOLOGIES



skattefunn



siva

ENOVA



# EU-Funding



**PATHFINDER:**  
Researchers, technologists

**Horizon Europe**  
THE NEXT EU RESEARCH & INNOVATION PROGRAMME (2021 – 2027)

**The European Green Deal**  
von der Leyen Commission  
#EUGreenDeal

**FAST TRACK**  
TO INNOVATION IN HORIZON 2020

**ACCELERATOR:**  
Start-ups, SMEs and entrepreneurs

# Norwegian Soft Funding

Minister of Trade and Industry:

- Create Jobs
- Increase Investments
- Increase Export
- Cut in Greenhouse Gases



# Which support scheme is suitable?

## Research, innovation and business development

GCE | **NODE** | AN INDUSTRY-DRIVEN CLUSTER FOR OCEAN TECHNOLOGIES



Basic research



Applied research



Innovation



Commercialization



Growth

The Research Council of Norway

Regional Funds

SkatteFUNN

ENOVA

EU-Funding (Horisont 2020)

Innovation Norway

SIVA – Norwegian Catapult Centres

Eksfin



| Research   | Innovation / Development   |
|--|--|
| All types of companies   | Focus on SMEs (with large company partner)   |
| Typically many project participants  | Often few project participants (customer)  |
| With Research partner  | Often without Research partner   |
| Knowledge & research driven  | Market driven  |
| No application deadline (but cut-off dates 2-3 per year)   | No application deadline  |
| Evaluation of expert panel   | Evaluation of case manager (large; project panel)  |
| Case manager → formal input  | Case manager → assists with input / help   |
| NB! SkatteFunn deviates from this division   |  |
| Industrial Research:   | Experimental Development:  |
| Acquire <b>new knowledge</b> and skills to develop new products, processes or services. Or <b>significant</b> improvement of existing products, processes or services. | <b>Combine existing</b> knowledge and skills to develop new or improved products, processes or services. |

# Soft Funding framework for development projects

|                               | Small Companies |             | Medium-sized Companies |             | Large companies |             |
|-------------------------------|-----------------|-------------|------------------------|-------------|-----------------|-------------|
|                               | General         | Cooperation | General                | Cooperation | General         | Cooperation |
| Industrial Research:          | 70 %            | 80 %        | 60 %                   | 75 %        | 50 %            | 65 %        |
| Experimental Development<br>: | 45 %            | 60 %        | 35 %                   | 50 %        | 25 %            | 40 %        |

Cooperation → Partnership

## **Industrial Research:**

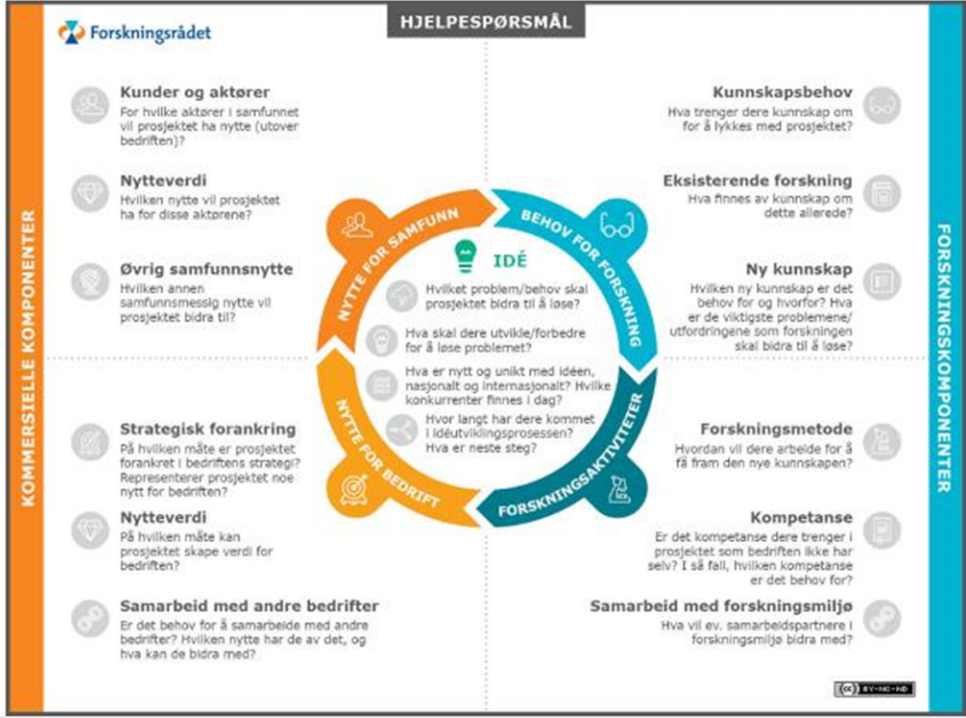
Planned research or critical examination with a view to acquiring **new knowledge** and skills to develop **new products**, processes or services or which may lead to **significant improvement** of existing products, processes or services.

## **Experimental Development:**

Acquisition, **combination**, design and use of **existing** scientific, technological, business and other relevant knowledge and skills to develop **new or improved products**, processes or services.

[www.forskningsradet.no/sok-om-finansiering/midler-fra-forskningsradet/betingelser-for-tildeling-av-statsstotte/](http://www.forskningsradet.no/sok-om-finansiering/midler-fra-forskningsradet/betingelser-for-tildeling-av-statsstotte/)

# Useful Tools and Help with Project Development



**GCE NODE assist companies in navigating around the Soft Funding Programs.**

**Contact us if you want help and follow up meetings!**

- Norwegian Funding: Christian B. von der Ohe (RD&I Manager): [christian@gcenode.no](mailto:christian@gcenode.no), +47 917 29 426  
Jan Helge Viste (Project Manager Digitalization): [janhelge@gcenode.no](mailto:janhelge@gcenode.no), +47 909 25 977
- EU-Funding: Isabelle-Louise Aabel (EU-Advisor): [isabelle@gcenode.no](mailto:isabelle@gcenode.no), +47 992 75 549

**<https://gcenode.no/>**