

# siva

Partner presentation

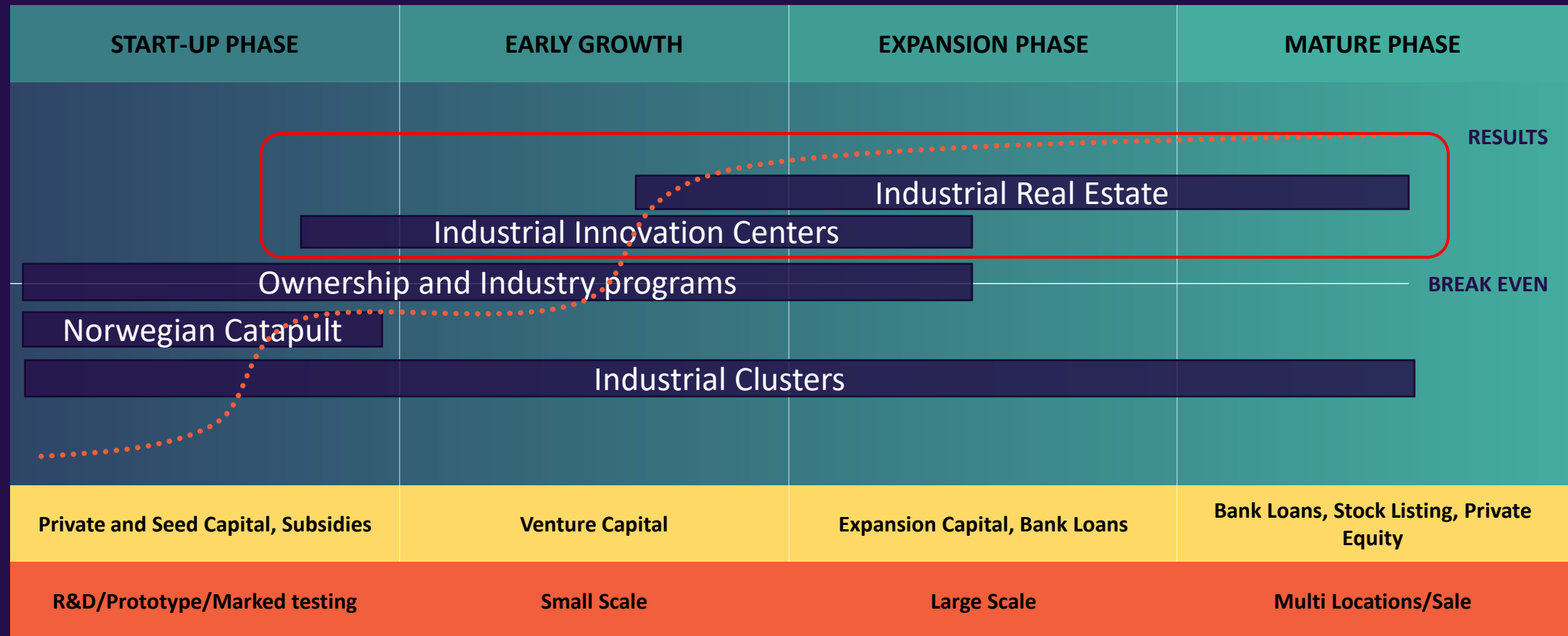


## Content:

1. Siva Real Estate
2. Projects and properties –  
Snapshots



# Industrial Development and Sivas Tools





## **Siva manages, operates and develops a real estate portfolio of approx. 5 bn NOK**

The portfolio, consisting of more than **100 properties** with a combined area of more than **510.000 m<sup>2</sup>**, is well spread across the country in various industries and businesses.

# Project assessment

Siva, purpose & strategy 	Effects on Society 	The project 



# Project assessment

## Siva, purpose & strategy



- Siva's purpose, goal and strategy
- Risk
- Portfolio
- Triggering / legitimizing
- Exit-strategy
- Partnership/private capital
- Sivas tools/other governmental instruments

## Effects on Society



## The project




# Project assessment

**Siva, purpose & strategy** 

- Siva's purpose, goal and strategy
- Risk
- Portfolio
- Triggering / legitimizing
- Exit-strategy
- Partnership/private capital
- Sivas tools/other governmental instruments

**Effects on Society** 

- Value creation
- Synergies
- Political direction
- Sustainability
- Employment

**The project** 



# Project assessment





# Project assessment

## Siva, purpose & strategy



- Siva's purpose, goal and strategy
- Risk
- Portfolio
- Triggering / legitimizing
- Exit-strategy
- Partnership/private capital
- Sivas tools/other governmental instruments

## Effects on Society



- Value creation
- Synergies
- Political direction
- Sustainability
- Employment

## The project



- Initiators
- Product/service (level of innovation)
- Market/competition
- Location
- Network and connections
- Economy
- Progress
- Technicality of the building





## **Project and properties Snapshots**



One of the World's most Energy-efficient and environmentally friendly Ferrosilicon plants

Annual sales of 1 billion NOK

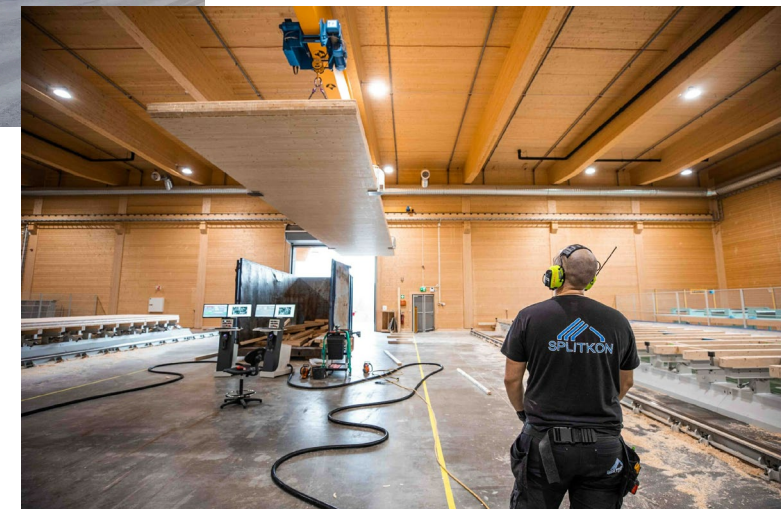
AlgOpti – project between University of Tromsø and Finnfjord to grow algae feeding of the produced CO<sub>2</sub> becoming fish feed



One of the largest factories in the world for production of cross laminated timber

A more sustainable construction industry

- Construction 2018
- 16.200 m<sup>2</sup>
- Siva, engineering and construction



- There are not many private real estate investors who want to invest in this type of industry. Therefore, the public policy apparatus, which Siva represents, is extremely important for establishing new industry. Siva operate as a professional real estate player, and that is how we have experienced them from the start.

CEO Morten Johansen, Splitkon AS





- Construction 2009, 5.800 m<sup>2</sup>
- Siva, engineering and construction
- Property sold: 2017



- To us, Siva was an important instrument for realizing an important project.

CEO Sigvald Rist, Lofotprodukter





### Norway in total:

- 38 business gardens
- 33 incubators
- 5 catapult centers
- 72 innovation companies
- 102 **Properties**
- 510 000 square meters
- 617 tenants

### North:

- 9 business gardens
- 7 incubators
- 14 innovation companies
- 14 **properties**

### West and Central:

- 17 business gardens
- 12 incubators
- 3 catapult centers
- 33 innovation companies
- 59 **properties**

### South and East:

- 12 business gardens
- 14 incubators
- 2 catapult centers
- 25 innovation companies
- 27 **properties**

**siva**